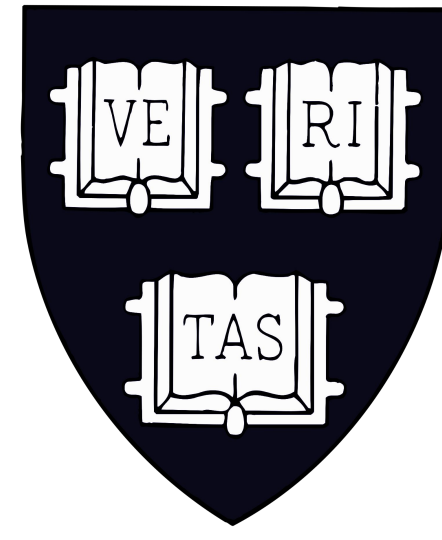


Survival of colorectal small cell carcinoma and comparison with colorectal adenocarcinoma



Nora Y. Sun¹, Qian Shi², Patrick McGarrah², Thor Halfdanarson², Zhaohui Jin²

¹Harvard University, Cambridge, MA, USA

²Mayo Clinic Rochester, Rochester, MN



INTRODUCTION

- Colorectal small cell carcinoma (SCC), comprising fewer than 1% of colorectal cancers, is associated with a poor prognosis.
- However, detailed survival information is limited due to its rarity.

Aim: In this study, we performed a survival analysis using **Survival, Epidemiology, and End Result (SEER) database (2000-2022)** and compared outcomes with colorectal adenocarcinoma.

METHODS

- Patients with SCC or adenocarcinoma with colon or rectal primaries were extracted from SEER database.
- AJCC stage was calculated based on the 8th edition TNM classifications.
- Stage-by-stage median overall survival (mOS) was calculated by Kaplan-Meier method.
- The mOS were compared between SCC and adenocarcinoma and between colon SCC and rectal SCC using log-rank test.

RESULTS

Stage (AJCC)	Colon small cell cancer (n)	Colon adenocarcinoma (n)	Rectal small cell cancer (n)	Rectal adenocarcinoma (n)
Stage I	19	114,213	27	54,702
Stage II	17	121,757	17	38,417
Stage III	40	104,793	50	46,687
Stage IV	245	83,542	260	36,652

Table 1. Patient stage at diagnosis.

Stage (AJCC)	Colon small cell cancer (mOS)	Colon adenocarcinoma (mOS)	Colon: SCC vs Adenocarcinoma P-value	Rectal small cell cancer (mOS)	Rectal adenocarcinoma (mOS)	Rectal: SCC vs Adenocarcinoma P-value
Stage I	32	144	<0.0001	23	160	<0.0001
Stage II	38	106	0.4	16	106	<0.0001
Stage III	14	82	<0.0001	19	107	<0.0001
Stage IV	2	13	<0.0001	7	17	<0.0001

Table 2. Median overall survival by stage.

RESULTS, cont'd

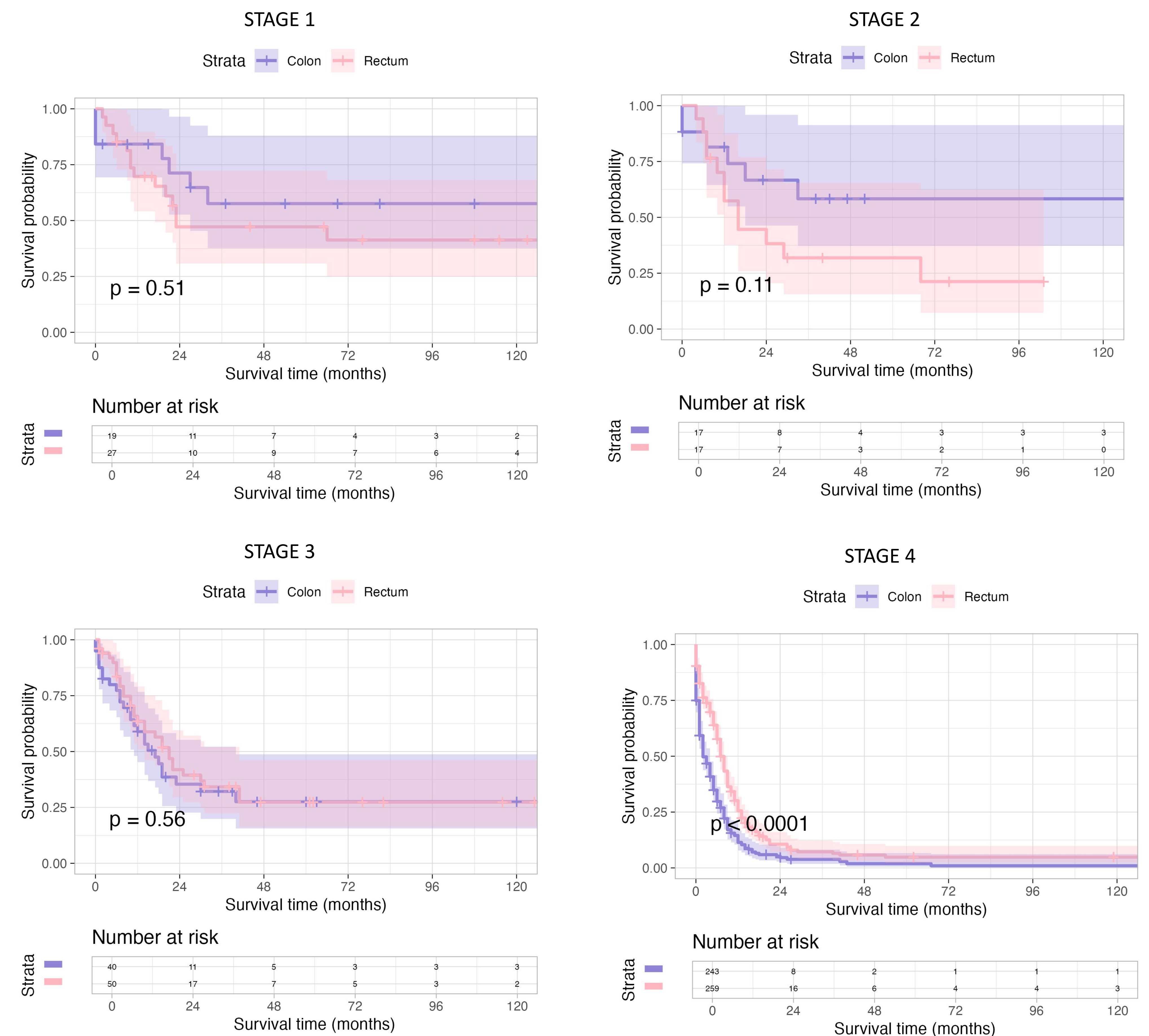


Figure 1. Site comparison: Kaplan-Meier survival curves for colorectal small cell carcinoma.

DISCUSSION

- Colorectal SCC is an aggressive subtype of colorectal malignancy with poor prognosis, and most patients present with stage IV disease.
- When compared with stage IV colon SCC, stage IV rectal SCC has significantly longer mOS,** whereas there were no significant mOS differences between early-stage colon and rectum SCC.
- Further research should continue exploring early diagnosis and effective therapies for this rare, aggressive malignancy.